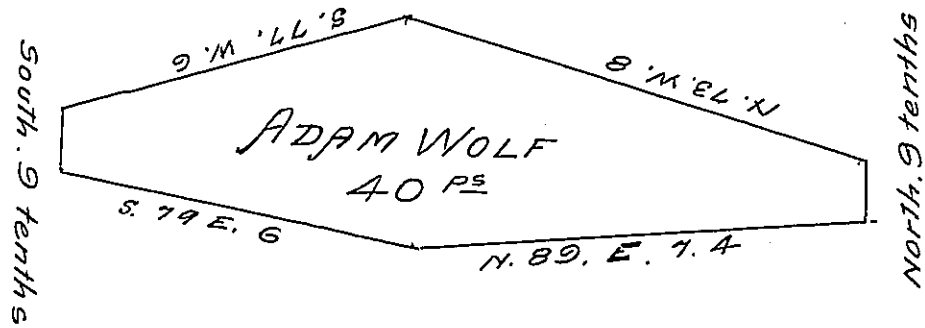


YORK COUNTY SHORE



LANCASTER COUNTY SHORE

A Draught of Superior Island situate in Donegal Township Lancaster County opposite to lands of Jacob Kryder on the Lancaster Shore and to lands of Henry B. Grubb on the York Shore about One hundred perches South East of Forge Island. containing One quarter of an acre strict measure. Surveyed in pursuance of a Warrant dated the 30<sup>th</sup> day of August Anno Domini 1819 granted to Adam Wolf

Jacob Hibshman D.S.

To Jacob Spangler Esq.  
Surveyor General

IN TESTIMONY that the above is a copy of the original remaining on file in the Department of Internal Affairs of Pennsylvania, made conformably to an Act of Assembly approved the 16th day of February 1833, I have hereunto set my hand and caused the Seal of said Department to be affixed at Harrisburg, this twenty-ninth day of May 1907

Henry Houck,  
Secretary of Internal Affairs.